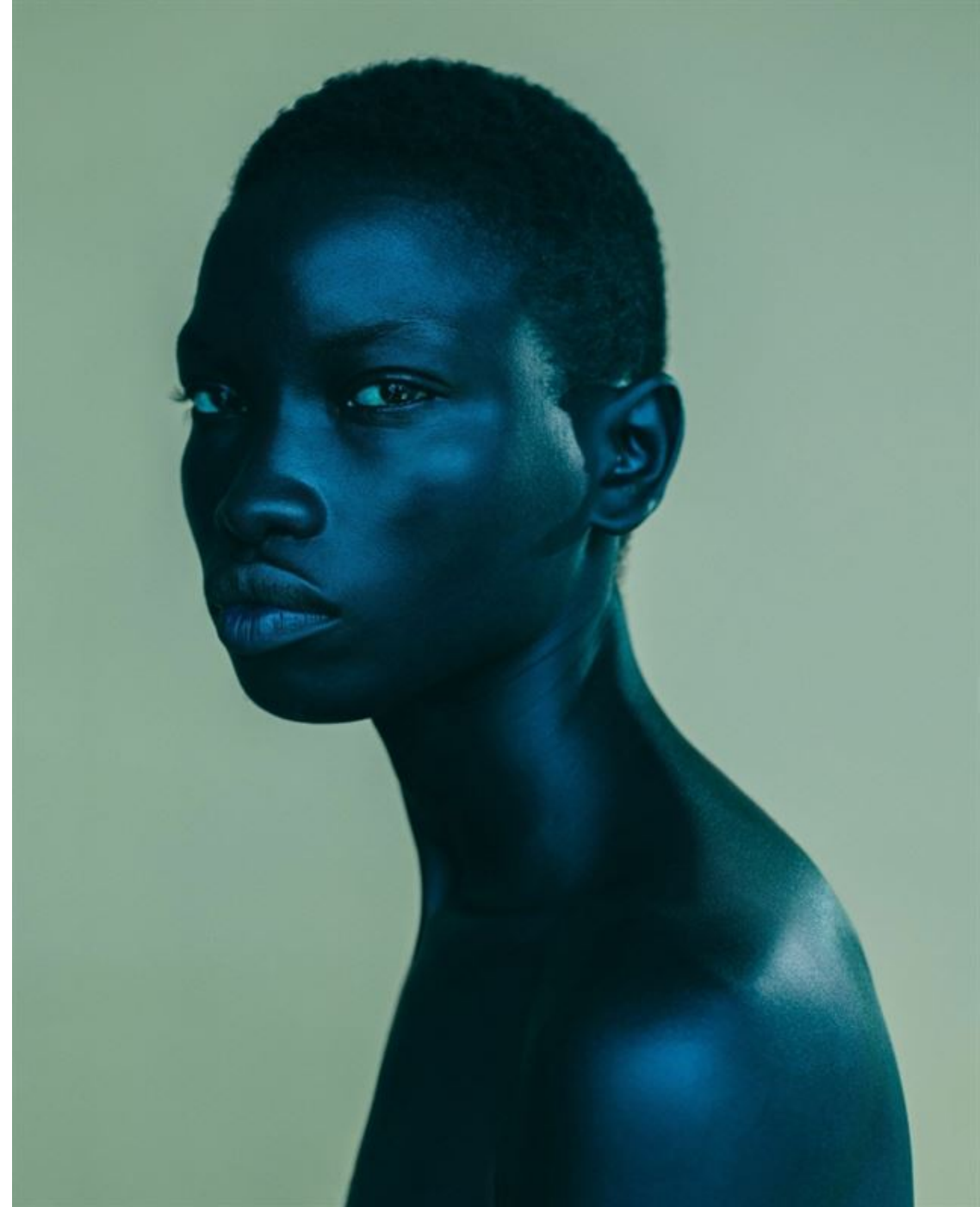


WAYNE BOOTH

HEIGHT	178 - 5' 10"
BUST	76 - 30"
WAIST	58 - 23"
HIPS	84 - 33"
SHOES	42 - 12
HAIR	brown
EYES	brown

@waynebooth_







LEFT Dégradé fil-coupé midi dress by **Carolina Herrera**. Ruffle roll-neck sweater by **Shrimps**. Bing 100 crystal-embellished mules by **Jimmy Choo**. Staggered stardust tsavorite & rhodium earrings and Sapphire and rhodium-plated ring, both by **Lynn Ban**. RIGHT Contrast bell-sleeve sequined jumpsuit by **Halpern**. Essie leather Mary-Jane mules by **Erdem**. Staggered stardust sapphire & rhodium earrings by **Lynn Ban**.

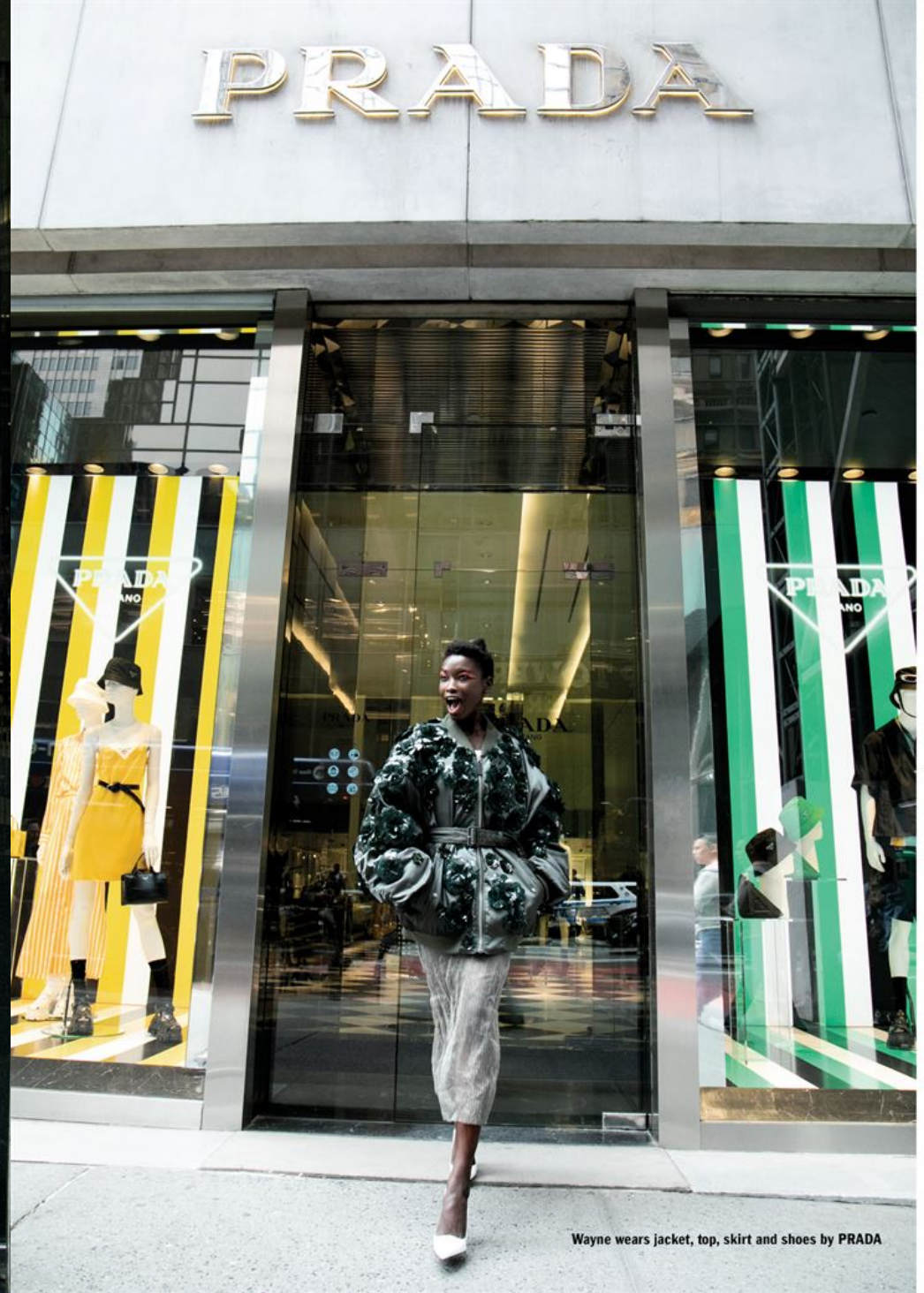
SHOP RAINBOW NIGHTS







Wayne wears coat, jumper and shoes by PRADA



Wayne wears jacket, top, skirt and shoes by PRADA





TRANSPARENCE

À GAUCHE. PULL EN
COTON. ERIC BOMPARD,
COMBINAISON PANTALON
EN MOUSSELINE ROULÉE
À LA TAILLE. ACNE STUDIOS,
CULOTTE PRIMADONNA.
BRACELET SUR LE PULL,
PRADA.

DRAPÉ

À DROITE. MAILLOT
DE BAIN EN VELOURS.
VERONIQUE LEROY.



PHOTOS DAVID ROEMER









BLANC

FASHION | ART | MUSIC



HEAT

THE CUT



