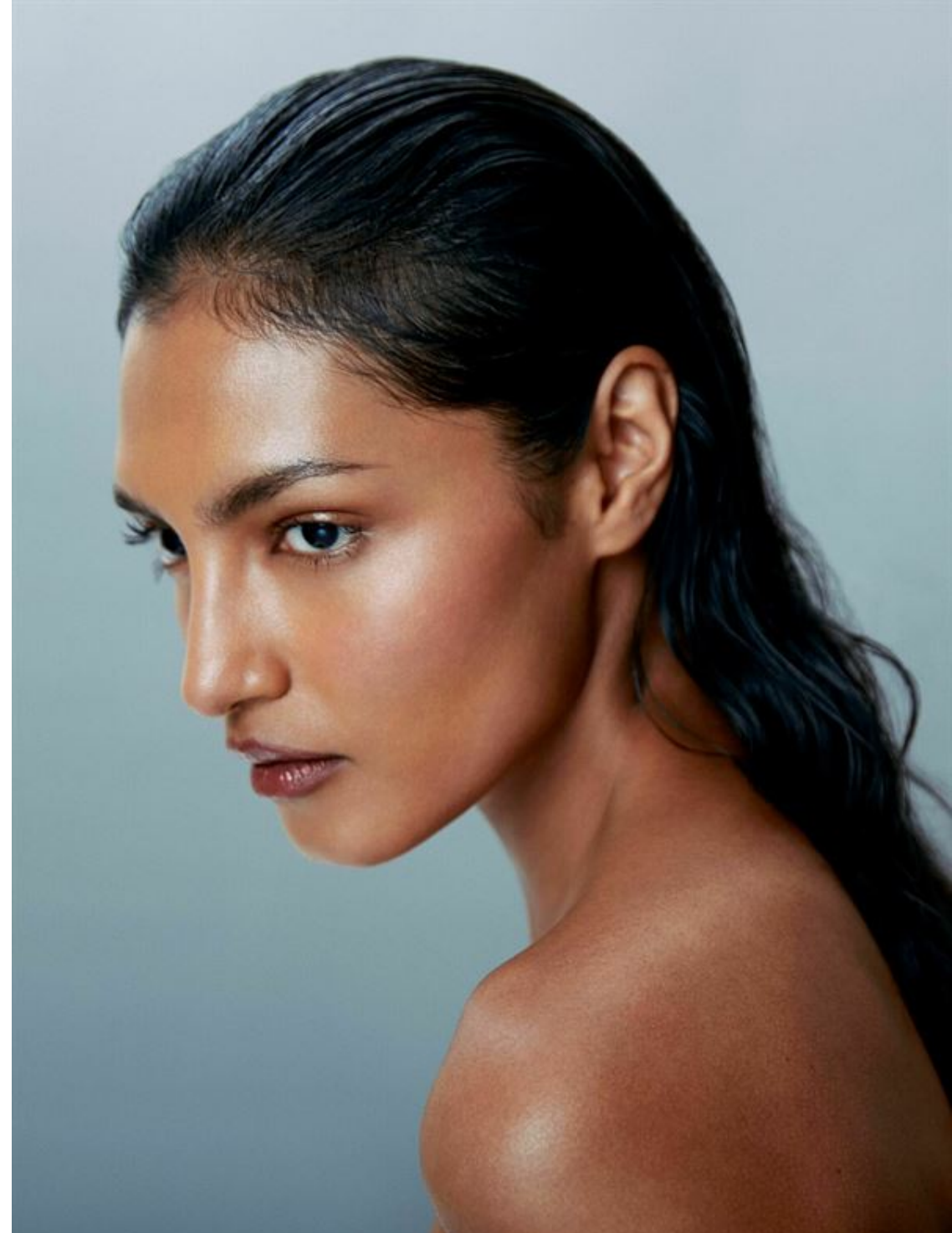


SHAANTI CHAITRAM

HEIGHT	175 - 5' 9"
BUST	79 - 31"
WAIST	60 - 23"
HIPS	87 - 34"
SHOES	39 - 9
HAIR	black
EYES	brown

@sha.anti



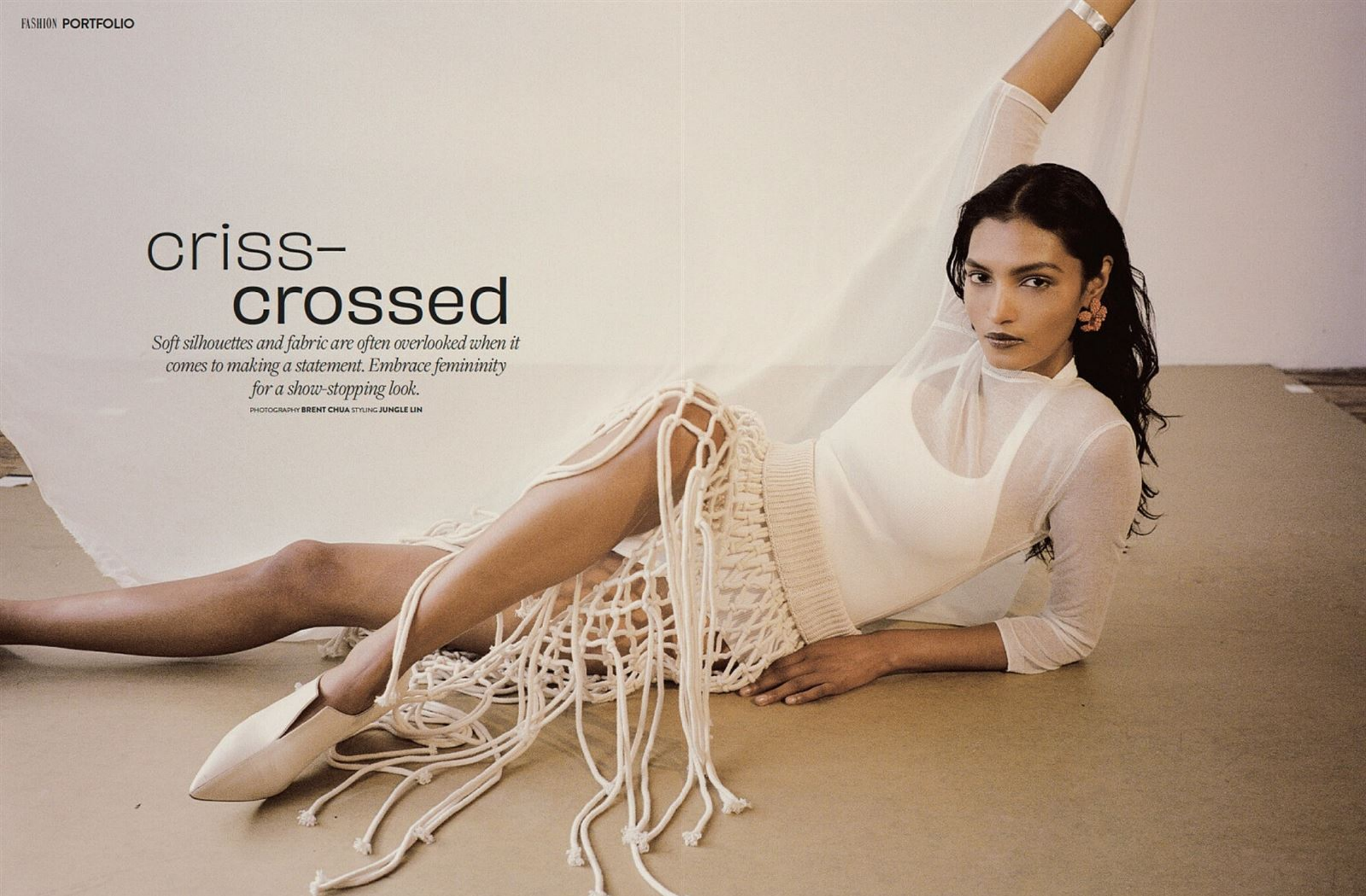




criss- crossed

Soft silhouettes and fabric are often overlooked when it comes to making a statement. Embrace femininity for a show-stopping look.

PHOTOGRAPHY BRENT CHUA STYLING JUNGLE LIN









SHAANTI wears CELINE BY HEDI SLIMANE













