

GILBERT VAN DAMME

HEIGHT	189 - 6' 2"
BUST	96 - 38"
WAIST	76 - 30"
HIPS	93 - 36"
SHOES	44,5 - 11
HAIR	brown
EYES	brown

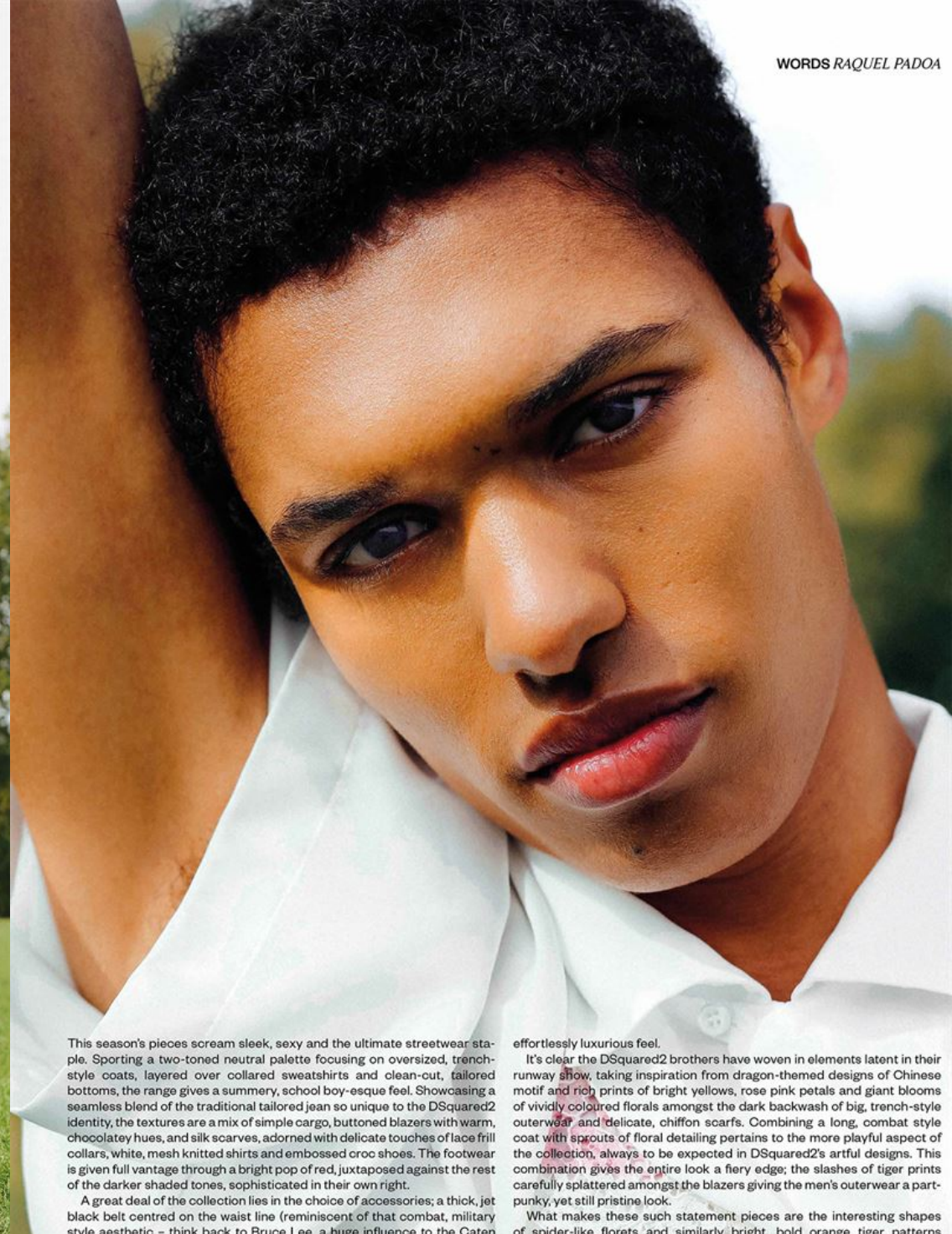
@gilius.san

assem









This season's pieces scream sleek, sexy and the ultimate streetwear staple. Sporting a two-toned neutral palette focusing on oversized, trench-style coats, layered over collared sweatshirts and clean-cut, tailored bottoms, the range gives a summery, school boy-esque feel. Showcasing a seamless blend of the traditional tailored jean so unique to the DSquared2 identity, the textures are a mix of simple cargo, buttoned blazers with warm, chocolatey hues, and silk scarves, adorned with delicate touches of lace frill collars, white, mesh knitted shirts and embossed croc shoes. The footwear is given full vantage through a bright pop of red, juxtaposed against the rest of the darker shaded tones, sophisticated in their own right.

A great deal of the collection lies in the choice of accessories; a thick, jet black belt centred on the waist line (reminiscent of that combat, military style aesthetic – think back to Bruce Lee, a huge influence to the Caten

effortlessly luxurious feel.

It's clear the DSquared2 brothers have woven in elements latent in their runway show, taking inspiration from dragon-themed designs of Chinese motif and rich prints of bright yellows, rose pink petals and giant blooms of vividly coloured florals amongst the dark backwash of big, trench-style outerwear, and delicate, chiffon scarves. Combining a long, combat style coat with sprouts of floral detailing pertains to the more playful aspect of the collection, always to be expected in DSquared2's artful designs. This combination gives the entire look a fiery edge; the slashes of tiger prints carefully splattered amongst the blazers giving the men's outerwear a part-punky, yet still pristine look.

What makes these such statement pieces are the interesting shapes of spider-like florets and similarly bright, bold orange tiger patterns







